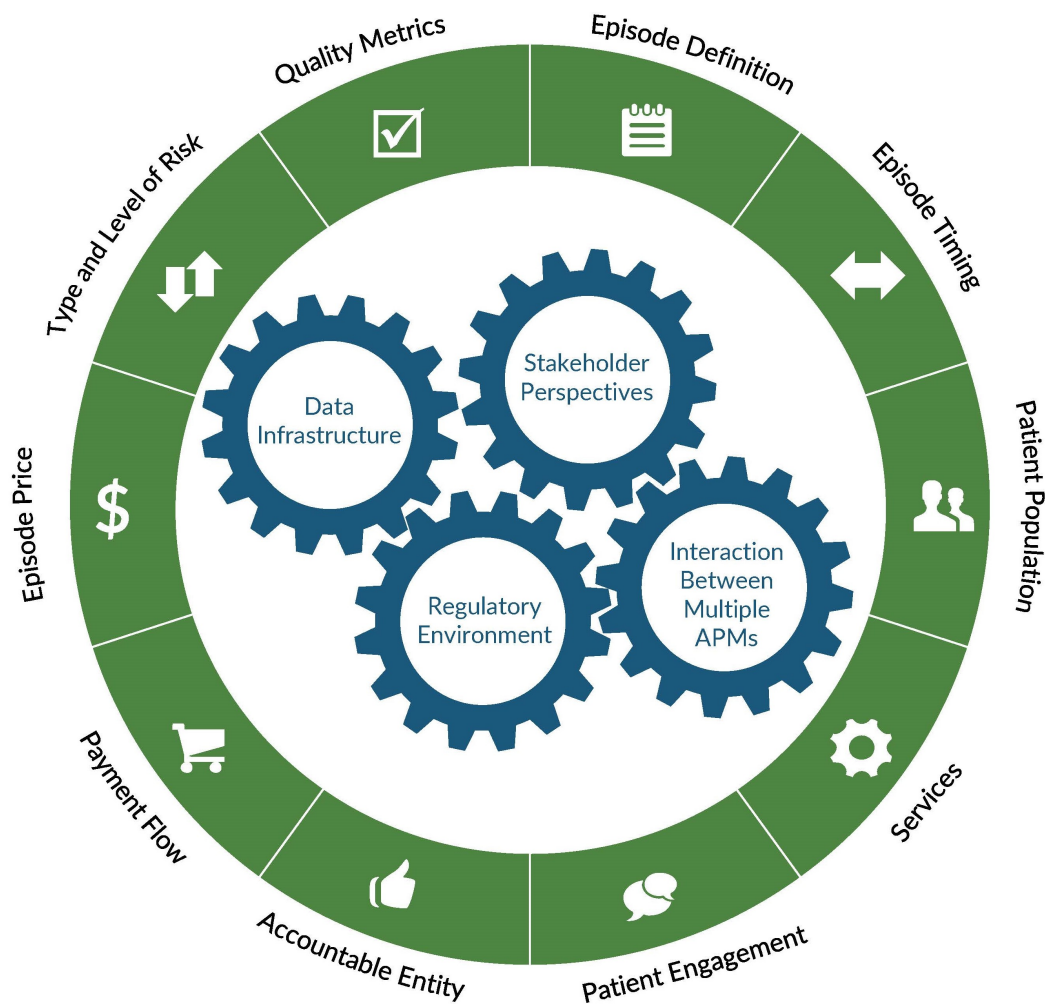


Figure 3: Episode Payment Design Elements & Operational Considerations



Operational Considerations

- **Stakeholder Perspectives:**
 Ensure that the voices of all stakeholders –consumers, patients, providers, payers, states, and purchasers – are heard in the design and operation of episode payments
- **Data Infrastructure:**
 Understand and develop the systems that are needed to successfully operationalize episode payment
- **Regulatory Environment:**
 Recognize and understand relevant state and/or federal regulations, and understand how they support or potentially impede episode payment implementation
- **Interaction between multiple APMs:**
 Recognize questions and issues that may arise when determining how to implement episode payment together with other alternative payment models, such as population-based payment