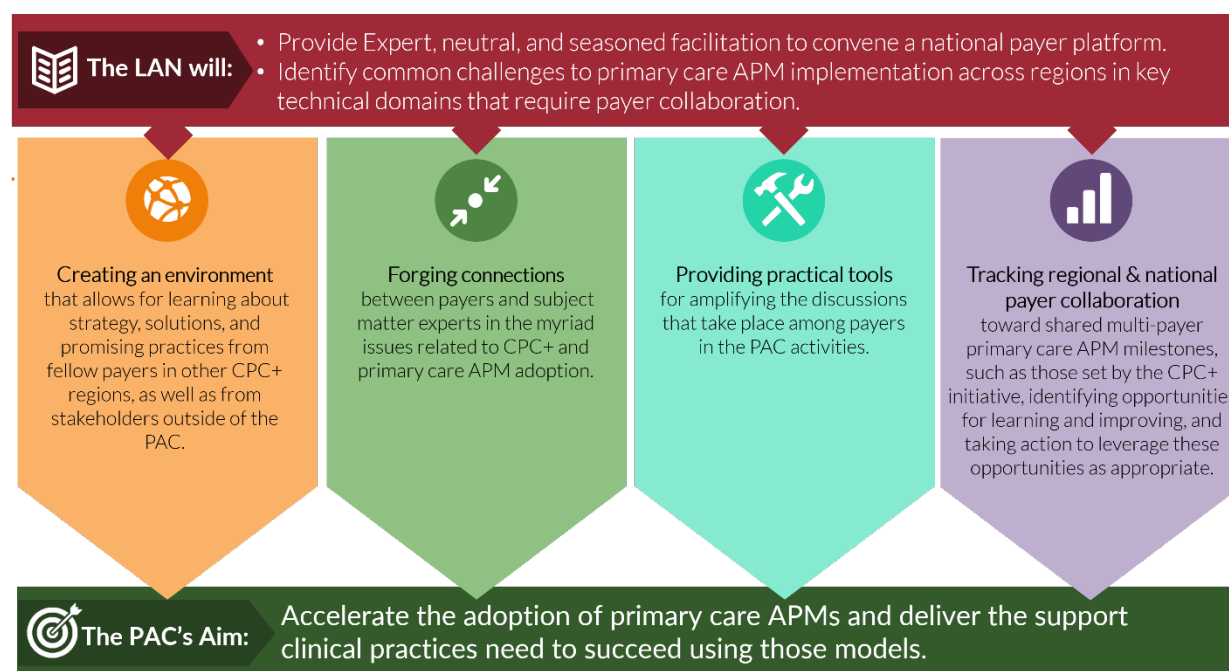


OVERVIEW:

The LAN Primary Care Payer Action Collaborative (PAC)

WHAT IS THE PAC?

The PAC will include representatives from payer organizations participating in multi-payer primary care APM efforts, including, but not limited to, the CPC+ initiative. The PAC is a participant-driven, “national table” to which payers can bring the issues and challenges related to implementing alternative payment models that support primary care delivery transformation. As facilitated by the LAN, the PAC will offer participants a range of supports and activities (depicted below), with the goal of helping payers support primary care practices in making significant and fundamental changes in how care delivery occurs across these five primary care functions: 1) access and continuity, 2) care management, 3) comprehensiveness and coordination, 4) patient and caregiver engagement, and 5) planned care and population health. While these goals are CPC+ oriented, the PAC is open to payer organizations beyond CPC+. There will be direct linkages between the challenges being addressed by payers at their “regional tables” to the topics on which the PAC focuses. In other words, there is no PAC without the regional collaboratives.



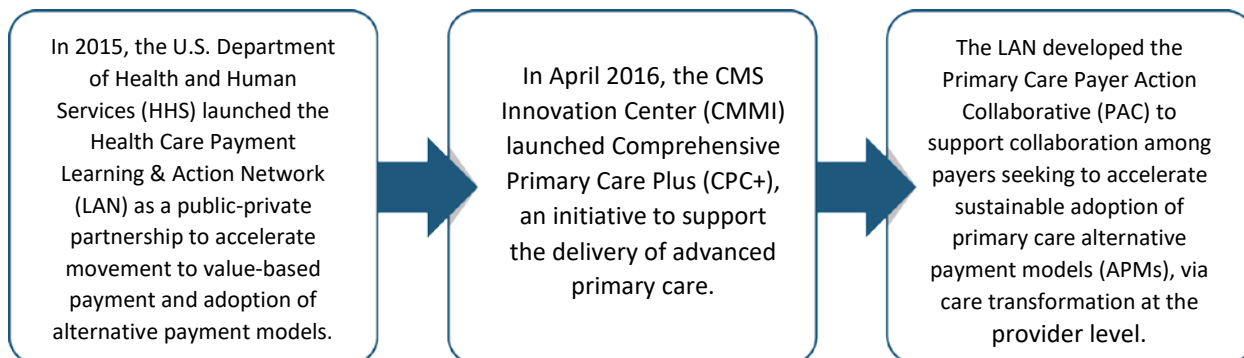
As the LAN pivots from a conceptual learning phase into an action and implementation phase, we want to support payers currently engaging in multi-payer primary care APM implementation efforts, including CPC+, via the LAN Primary Care Payer Action Collaborative.

Focus Areas
<ul style="list-style-type: none">• Commitment to implement APM Category 3 and/or 4 payments• Seeking solutions to challenges related to implementation<ul style="list-style-type: none">✓ Aggregated multi-payer data✓ Aligning quality measures✓ Total cost of care issues✓ Evaluation issues

OVERVIEW:

The LAN Primary Care Payer Action Collaborative (PAC)

BACKGROUND



WHY JOIN

Participation in the PAC will provide organizations with a structured resource to enable efficient sharing of ideas and promising practices, with the goal of helping participants accelerate implementation within their organization and with their partners. In the long term, participation will put payers in the position of being leaders in the movement toward accelerated, aligned adoption of APMs across the nation. Finally, by participating in the PAC, payers will provide the LAN with feedback on multi-payer APM implementation issues based on their organizations' specific experiences, creating a bi-directional learning opportunity. **The PAC is a voluntary effort. There is no requirement that your organization, as a CPC+ payer partner, join the PAC. The LAN's goal is to make your engagement in the PAC valuable; participation should support and amplify the potential of your organization's engagement in CPC+.**

WHAT IS INVOLVED IN MY ORGANIZATION BECOMING A PARTICIPANT

The time commitment of the PAC will vary; however, the LAN anticipates up to two to four hours of PAC activities taking place each month. Participants may be asked to devote additional time to review information and prepare for these activities. The success of the PAC in accelerating primary care transformation will be driven by the active participation of its members. Organizations will be asked to commit to engaging on all topics that arise in the PAC forums, in order to maintain the integrity of the effort. There will be no discussion of issues that could violate anti-trust regulations.

HOW TO JOIN

Contact the Action Collaborative Lead, Tanya Alteras (talteras@mitre.org) to find more information or sign up to participate on the PAC. You can also visit the website to learn more about the LAN and PAC: <https://hcp-lan.org/>.



OCTOBER 25, 2016

LAN Fall Summit

Washington Marriott Wardman
Park Hotel, Washington, D.C.

Register Now!

<https://www.lansummit.org/>

OCTOBER 26, 2016

PAC Kick-Off Meeting

McLean, VA

Contact Tanya Alteras for more
details: talteras@mitre.org